

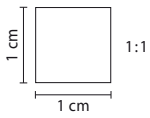
TESSUTI-ECOPELLI-PELLI
MELAMINICI-DIALUX-VETRI
LACCATURE-DECORAZIONI

*Fabrics - Eco leathers - Leathers
Melamine - Dialux - Glasses
Lacquered - Decorations*

2023

Finishings

clei



TB117
BS5852 ALABASTRO
CAT. 3



TB117
BS5852 CANVAS
CAT. 4



TB117
BS5852 FIOR DI SALE
CAT. 1



TB117
BS5852 ROGER 14 PERGAMENA
CAT. 1



TB117
BS5852 NAOMI 01 / ARENA
CAT. 3



TB117
BS5852 GUAREI 1 LIMBO
CAT. 2



TB117
BS5852 CERVINO
CAT. 3



TB117
BS5852 SHELL
CAT. 1



TB117
BS5852 PEPPER
CAT. 3



TB117
BARK
CAT. 4



TB117
BS5852 (PART 1) GREIGE
CAT. 2



TB117
BS5852 JOCKER 2 CERULEO
CAT. 2



TB117
BS5852 LIMO
CAT. 4



TB117
BS5852 CATTEDRALE
CAT. 4



TB117
BS5852 SPOLETO
CAT. 1



TB117
BS5852 NAOMI / 112 SHADOW
CAT. 3



TB117
BS5852 NUUR 15 SASSO
CAT. 3



TB117
BS5852 PASTELLO 8 SAFARI
CAT. 2



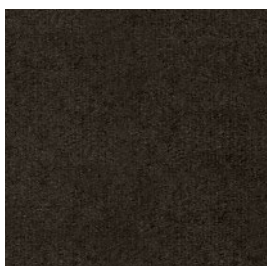
TB117
BS5852 CORTECCIA
CAT. 1



TB117
BS5852 VESUVIO
CAT. 2



TB117
BS5852 TOFFE
CAT. 1



TB117
BS5852 (PART 1) STROMBOLI
CAT. 2



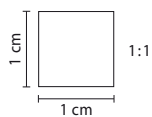
TB117
BS5852 OYSTER
CAT. 2



TB117
BS5852 GHIAIA
CAT. 4



TB117
BS5852 QUARZ
CAT. 1



TB117 BS5852 ANVERSA CAT. 2



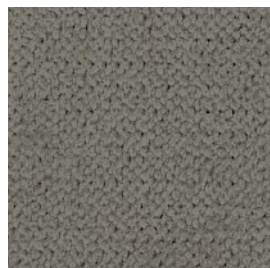
TB117 BS5852 RONDINE CAT. 4



TB117 BS5852 NUUR 14 RUSCELLO CAT. 3



TB117 BS5852 VALENCIA 301 CEMENTO CAT. 2



TB117 BS5852 INVERNO CAT. 1



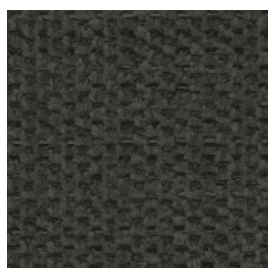
TB117 BS5852 (PART 1) ELEFANTE CAT. 2



TB117 BS5852 FOSSIL CAT. 1



TB117 BS5852 NAOMI 213 / STONE CAT. 3



TB117 BS5852 NAOMI 13 / CHARCOAL CAT. 3



TB117 BS5852 LAPILLO CAT. 3



TB117 BS5852 BOGART 6 AQUILA CAT. 2



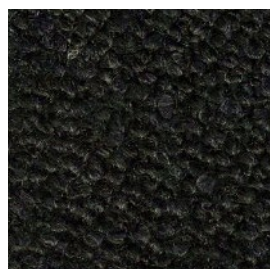
TB117 BS5852 PIRATA CAT. 2



TB117 BS5852 VORTICE CAT. 1



TB117 BS5852 RAVEN CAT. 3



TB117 BS5852 KAJAL CAT. 2



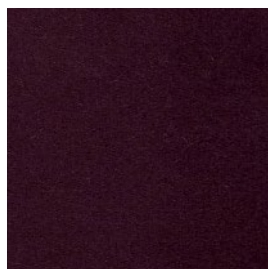
TB117 BS5852 WILD ROSE CAT. 3



TB117 BS5852 MONET CAT. 3



TB117 BS5852 PLUM CAT. 1



TB117 BS5852 (PART 1) IMPERO CAT. 2



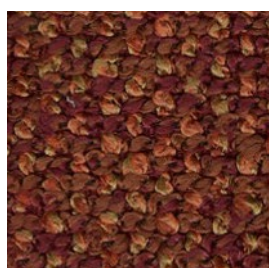
TB117 BS5852 GARIBALDI CAT. 1



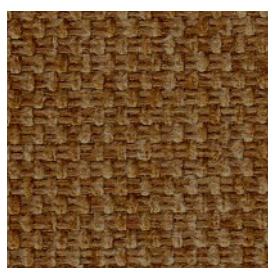
TB117 BS5852 (PART 1) LIVERPOOL CAT. 2



TB117 BS5852 MARTE CAT. 2



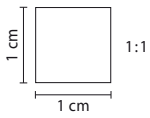
TB117 BS5852 BOURBON CAT. 3



TB117 BS5852 CAMEO CAT. 1



TB117 BS5852 (PART 1) COGNAC CAT. 2



TB117
BS5852 UMBRIA
CAT. 1



TB117
BS5852 AVENA
CAT. 3



TB117
BS5852 HARVEST
CAT. 1



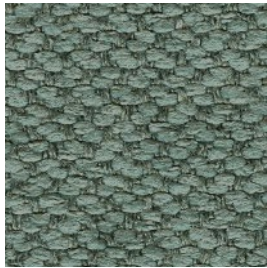
TB117
MUSTARD
CAT. 3



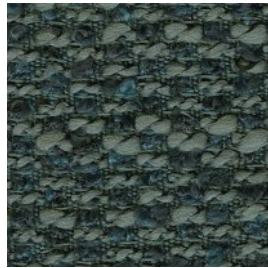
TB117
BS5852 VOLGA
CAT. 3



TB117
BS5852 EGEO 27 ZUCCHERO
CAT. 2



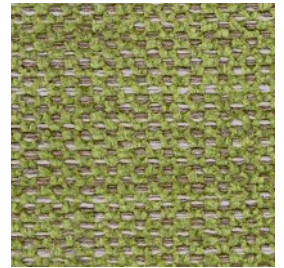
TB117
BS5852 ANATRA
CAT. 1



TB117
BS5852 CAREZZA
CAT. 3



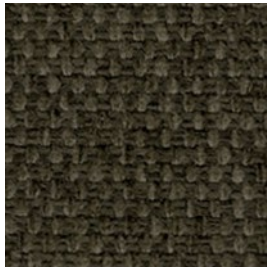
TB117
BS5852 (PART 1) AMSTERDAM 48 RABBIA
CAT. 2



TB117
BS5852 NAOMI 323 / KIW
CAT. 3



TB117
BS5852 VENEZIA
CAT. 2



TB117
BS5852 LOTUS
CAT. 1



TB117
BS5852 VENTO
CAT. 1



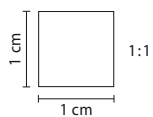
TB117
BS5852 FINLAND
CAT. 1



TB117
BS5852 (PART 1) AIR FORCE
CAT. 2



TB117
BS5852 SCOZIA
CAT. 1



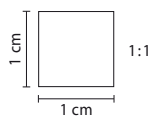
TB117
CLASSE 1

637 BLANCO
CAT. 2

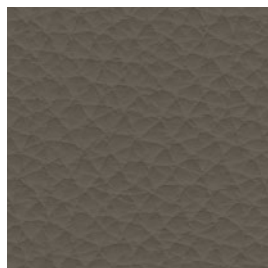


TB117
CLASSE 1

637/4 SANDALO
CAT. 2



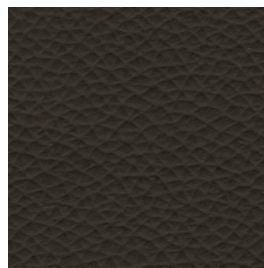
TB117 BOXLAND / 7732 ORSO
UNIEN 1021-1-2 CAT. PELLE - LEATHER



TB117 BOXLAND / 7733 GREY
UNIEN 1021-1-2 CAT. PELLE - LEATHER



TB117 PANAMA/5504 TERRA
UNIEN 1021-1-2 CAT. PELLE - LEATHER



TB117 PANAMA/5310 LAVA
UNIEN 1021-1-2 CAT. PELLE - LEATHER

Nome Name	Nome Tessuto Fabric name	Cod. Articolo Cod. Article	Cat.	H.	Composizione Composition	Res. Luce Res. light	Martindale (cicli) Martindale (cycles)	Ignifugo Flameproof	Finissaggio Fabric Treatment	Lavaggio Washing
1407	Marte	TEX1407	2	140	63 CO 37%LI%	4/5	32.500	BS5852 TB117		
637	Blanco - Sandalo	TEX637	2	137	8%PU 70%PVC 22%PL	4/5	50.000	CLASSE 1 Tb117		
AGAMOTTO	Ghiaia	TEXAGA	4	140	30 % VI - 16 %WO - 13 % LI - 12 % CO - 10 % PA - 9 % PL - 6% SE - 4 % PC	6/7	30.000	TB117		
BLIZARD	Venezia	TEXBLI	2	140	100%PL	5	100.000	BS5852 TB117	Idrorepellente	
BOGART	Aquila	TEXBOGART	2	140	73%PL 27%AC	4/5	100.000	TB117		
BRERA	Cattedrale - Rondine	TEXBRE	4	140	59 %PC - 26% CO - 10% WO - 5 %PL	4/5	30.000	BS5852 TB117		
CAPULET	Fior di sale - Cortecchia - lotus - Cameo	TEXCAP	1	140	100%PL	5	30.000	BS5852 TB117		
COPENHAGEN	Inverno	TEXCOP	1	140	100%PL	5	100.000	BS5852 TB117	Idrorepellente	
EGEO	Zucchero	TEXEGEO	2	140	100%PL	4/5	40.000	BS5852 TB117	Idrorepellente	
FICTION	Fossil - Toffe - Plum - Quarz - Umbria	TEXFIC	1	140	100 % PES	5	100.000	BS5852 TB117		
FOREVER	Raven - Bourbon - Monet	TEXFOR	3	140	100% PL	3/4	40.000	BS5852 TB117 BS5852 TB117	Quick clean	
GUAREI	Limbo	TEXGUAREI	2	140	77%PL 17%CO 6%PC	5/6	50.000	BS5852 TB117		
INDIANSKOP	Limo	TEXIND	4	140	34 % VI - 31 % CO - 15 % LI - 13 %PC - 7% PL	5/6	25.000	BS5852 TB117		
JOKER	Ceruleo	TEXJOKER	2	140	100%PL	4/5	45.000	BS5852 TB117		
LARIO	Wild Rose - Alabastro - Cervino	TEXLAR	3	140	42% CO- 26% PL- 32% PC	5/6	45.000	BS5852 TB117		
LEVANTE	Canvas	TEXLEV	4	140	47 %PC - 19 % WO - 16 % PL - 15 % CO - 3% NY	4/5	30.000	BS5852 TB117		
LIMA	Vesuvio - Anversa	TEXLIM	2	140	100 % PL	5	90.000	BS5852 TB117	Idrorepellente	
NAOMI	Arena - Shadow - Charcoal - Stone - Kiwi	TEXNAO	3	140	344 % CO - 56% PL	5	50.000	BS5852 TB117		
NUUR	Ruscello - Sasso	TEXNUUR	3	140	30%CO 23%VI 21%PL 16%PC 10%LI	5/6	30.000	BS5852 TB117		
OSTELLATO	Volga - Avena	TEXOST	3	140	65 % CO - 13 % VI - 11 % PC - 9 % PL - 2 % LI	5/6	35.000	BS5852 TB117		
PANTHEON	Bark	TEXPAN	4	140	29% VI - 23% PC - 24% CO - 14 % LI - 7% PL - 3% PA - 1% WO	4/5	20.000	TB117		

Nome Name	Nome Tessuto Fabric name	Cod. Articolo Cod. Article	Cat.	H.	Composizione Composition	Res. Luce Res. light	Martindale (cicli) Martindale (cycles)	Ignifugo Flameproof	Finissaggio Fabric Treatment	Lavaggio Washing
PASTELLO	Safari	TEXPASTELLO	2	140	85%PL 15%VI	4/5	50.000	BS5852 TB117		
PLANET	Pepper - Lapillo - Carezza	TEXPLA	3	140	51 % RICICLATO POLYOLEFIN -27 % PL - 22 % AC	5	45.000	BS5852 TB117	Quick clean riciclato	
PONGO	Mustard	TEXPON	3	140	80 % PES - 20 % CO	4/5	100.000	TB117		
PREZ	Oyster	TEXPRE	2	140	100%PP	7/8	40.000	BS5852 TB117		
RING	Kajal -Pirata	TEXRIN	2	140	100%PL	5	100.000	BS5852 TB117		
ROGER	Pergamena	TEXROGER	1	140	55%PL 45%PP	5	40.000	BS5852 TB117		
ROTTERDAM	Greige - Elefante Liverpool - Impero Air force - Cognac Stromboli - Rabbia	TEXROT	2	140	100%PL	5	100.000	BS5852 TB117		
SIDNEY	Shell -Harvest	TEXSID	1	140	100%PL	5	100.000	BS5852 TB117	Quick clean	
TOKIO	"Spoleto - Vento Anatra - Finland Garibaldi Scozia - Vortice"	TEXTOK	1	140	100%PL	4/5	100.000	BS5852 TB117	Idrorepellente	
VALENCIA	Cemento	TEXVAL	2	140	49%PL 51%CO	5	40.000	BS5852 TB117	Idrorepellente	

Articolo Article	Cat.	Composizione Composition	Res. Luce Res. light	Martindale (cicli) Martindale (cycles)	Ignifugo Flameproof
TEXPANAMA	PELLE LEATHER	Pelle bovina di origine Europea conciata al cromo Chrome tanned cattle hide originating in Europe	6+	50.000	UNI EN 1021 - 1 - 2TB117
TEXBOXLAND	PELLE LEATHER	Pelle di origine bovina conciata al cromo Chrome tanned cattle hide	6+	50.000	UNI EN 1021 - 1 - 2TB117

PULIZIA E MANUTENZIONE - CLEANING AND MAINTENANCE



Evitare la luce diretta del sole
Avoid direct sunlight



Evitare l'esposizione a fonti di calore
Avoid exposure to heat sources



Spolverare regolarmente la pelle con un panno morbido e asciutto
Dust the leather regularly with a soft, dry cloth



Eventuali macchie si possono eliminare usando un panno inumidito con acqua e sapone neutro
Any stains can be removed using a damp cloth and neutral soap



Asciugare immediatamente dopo il trattamento
Dry immediately after treatment



Non strofinare, ma tamponare delicatamente dai bordi al centro della macchia
Do not rub, but delicately dab from the edge towards the centre of the stain

CERTIFICAZIONI - CERTIFICATIONS



UNI 11239



ISO 14025



ISO 14067/CD2



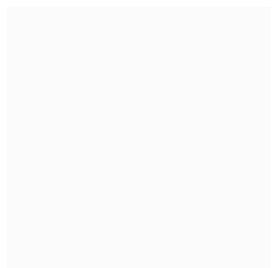
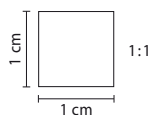
RAL-UZ 148



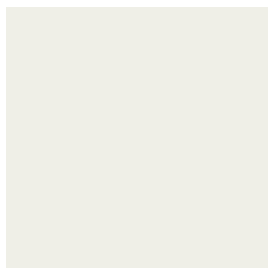
RAL-GZ 430

MELAMINICI - MELAMINE

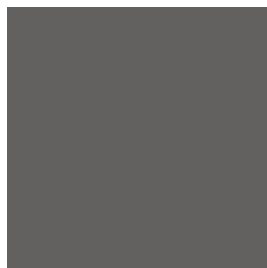
clei



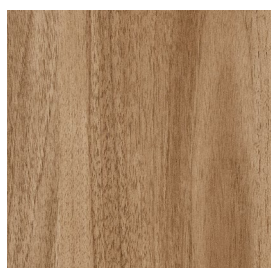
BIANCO



PERLA



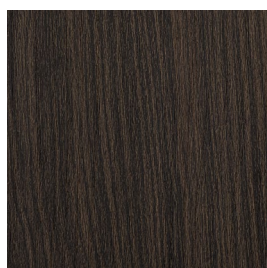
GRAFITE



NOCE

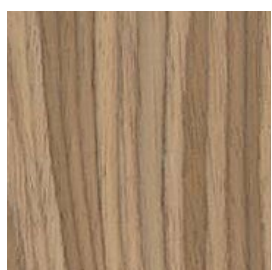


ROVERE SABBIA



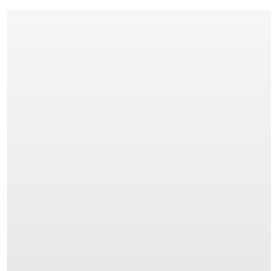
ROVERE DAKAR

ESSENZE - WOOD

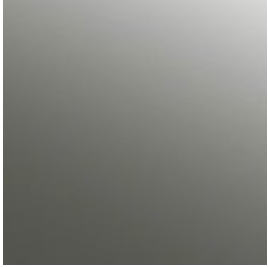
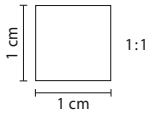


NOCE DOGATO
WAVY WALNUT

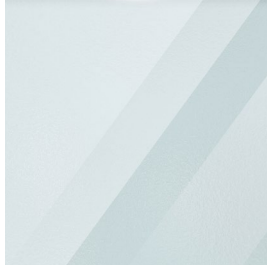
DIALUX



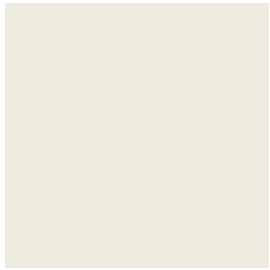
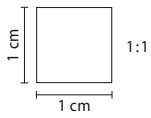
BIANCO LUCIDO
GLOSSY WHITE



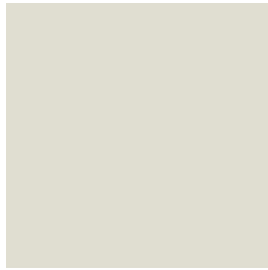
SPECCHIO FUMÉ
MIRROR FUMÉ



TRASPARENTE
TRASPARENT



DOVER



TALCO



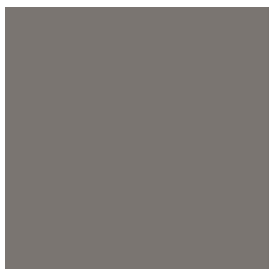
SAND



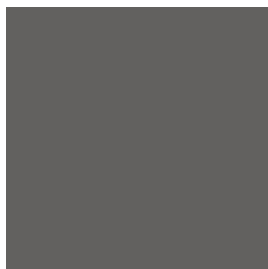
DESERTO



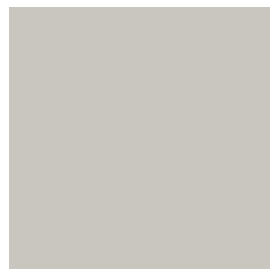
ARIZONA



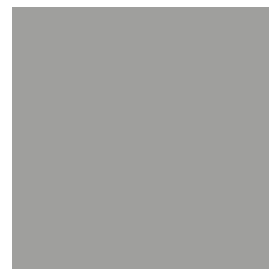
LONDRA



ANTRACITE



CENERE



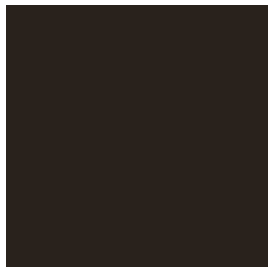
FUMO



PELTRO



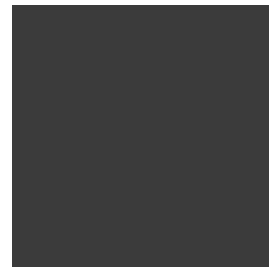
ALLUMINIO



ONICE



CACAO



NERO



TORRENTE



INDIO



AZZURRO POLVERE



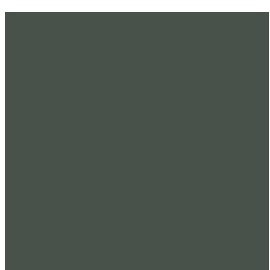
NOTTE



PISTACCHIO



FIORDO



BORNEO



TUFO



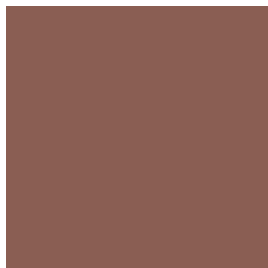
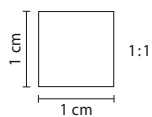
SENAPE



IVREA



PESCA



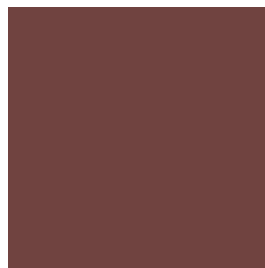
TERRACOTTA



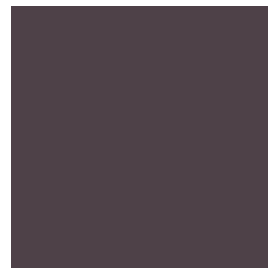
MANGO



CARDINALE



POMPEI



PRUGNA

Wave - Quadra - Petalo - Dot

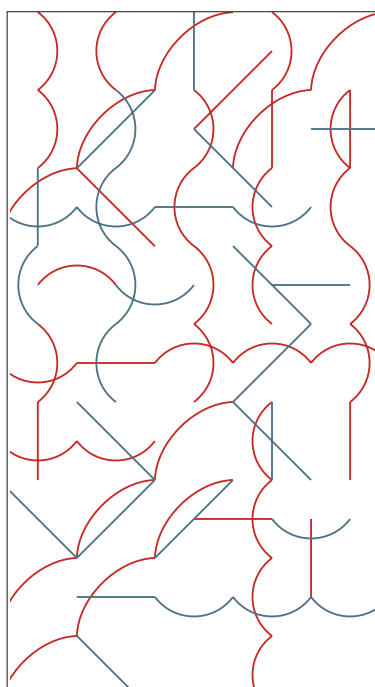
La stampa digitale viene eseguita solo su pannelli di facciata, su base nella finitura laccata dover e nelle configurazioni standard rappresentate. Le proporzioni delle stampe variano in base alla dimensione del pannello di facciata. Le caratteristiche e il colore della stampa sono indicative e potrebbero cambiare con ragionevole tolleranza.

The digital printing is carried out only on front panels, on lacquered Dover finish base and in the fixed configurations shown.

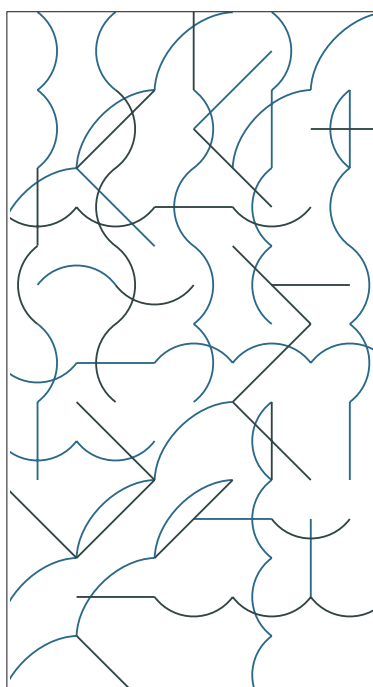
Proportions of prints vary according to the size of the front panel.

Features and colours of print are indicative and could vary with reasonable tolerance.

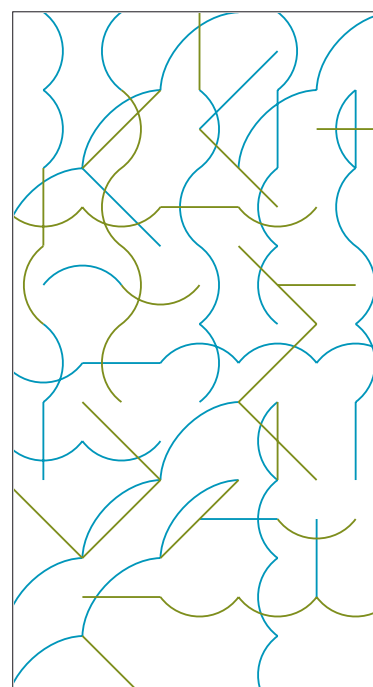
VERSIONE WAVE



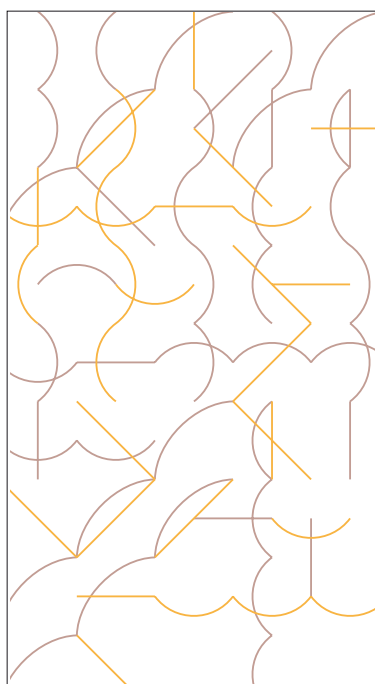
MANGO, AZZURRO POLVERE



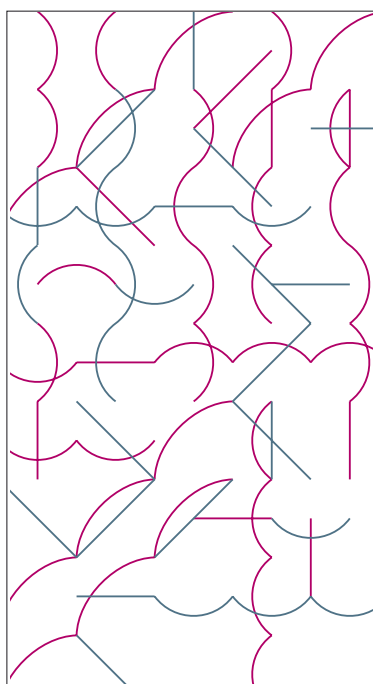
TIMO, INDIO



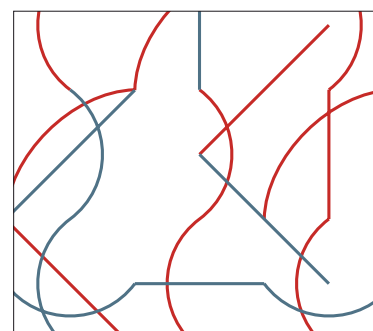
CAPRI, KIWI



CIPRIA, ORZO

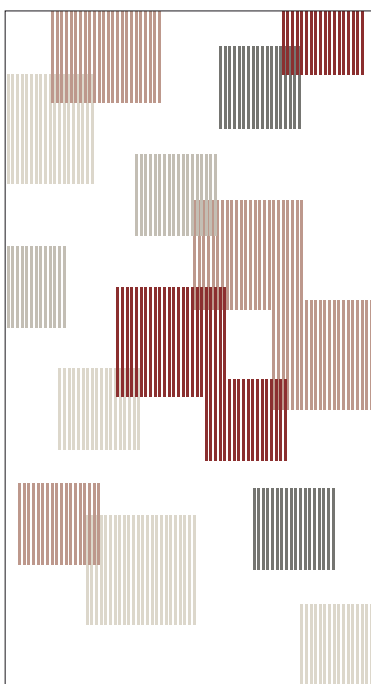


PEONIA, AZZURRO POLVERE



DETTAGLIO

VERSIONE QUADRA



SAND, CANAPA, SALVIA,
MAROCCO, CIPRIA



SAND, CANAPA, ABISSO,
INDIO, TIMO



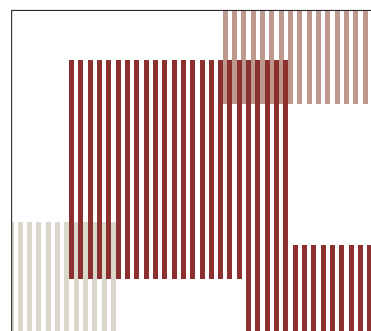
SAND, CANAPA, CAFFÈ,
TIBET, HOLLAND



SAND, CANAPA, CAFFÈ,
DANUBIO, NETTARE



SAND, CANAPA, ABISSO,
FANGO, ARGILLA



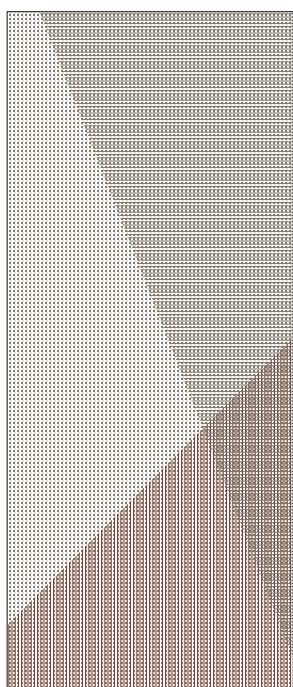
DETTAGLIO

Dot

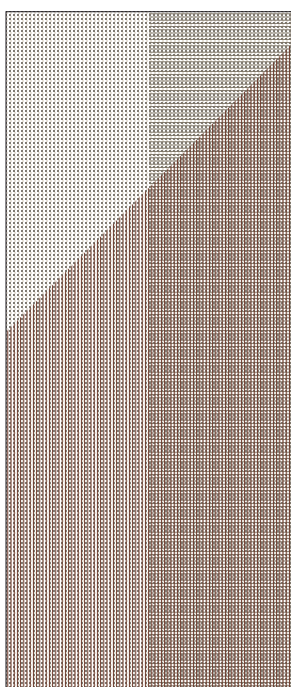
Solo per modello Ella & Louis

Only for model Ella & Louis

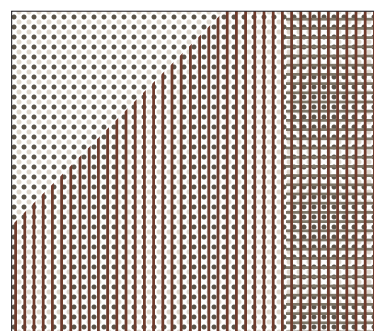
VERSIONE DOT



DOT SX



DOT DX



DETTAGLIO

STAMPA A RILIEVO 3D - 3D RELIEF PRINTING

clei

Solo per modello Tonale.

La stampa in 3D viene eseguita solo sui pannelli di facciata, su base nella finitura melaminico bianco e nella configurazione standard rappresentata, e in secondo tempo verniciata nei colori selezionati dalla cartella Cleicoloursystem.

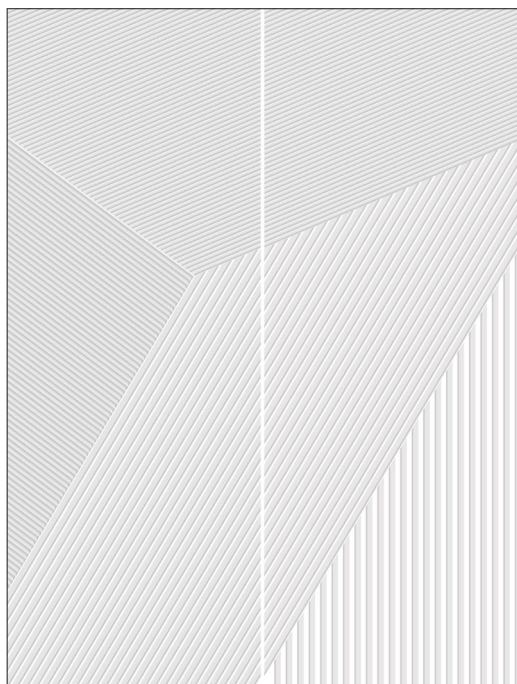
Le caratteristiche ed il colore sono indicative e potrebbero cambiare con ragionevole tolleranza. Con l'ordine e la relativa conferma, il committente accetta tali tolleranze.

Only for model Tonale.

3D printing is carried out only on front panels, on melamine white finish base, and in the fixed configurations shown, and afterwards painted in one colour of the Cleicoloursystem.

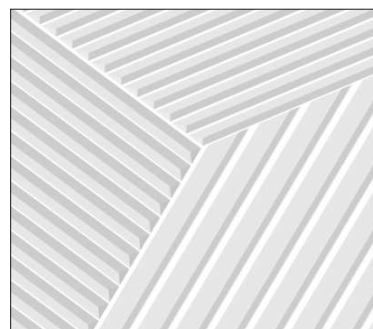
Features and colours of print are indicative and could vary with reasonable tolerance.

Upon the order and validation of the related confirmation of order, customer accepts these tolerances.



Colori abbinabili alla stampa 3D **Colours matchable to 3D printing.**

- Laccato Dover
- Laccato Sand
- Laccato Deserto
- Laccato Terracotta
- Laccato Antracite
- Laccato Cacao
- Laccato Borneo
- Laccato Cardinale



DETTAGLIO

IT _ I colori e le finiture visualizzate in questo documento sono puramente indicativi e possono differire dagli originali. L'azienda si riserva il diritto di apportare modifiche ai propri colori di serie in qualsiasi momento e senza alcun obbligo di preavviso.

EN _ Colours and finishes shown in this document are approximate and may differ from actual ones. The company reserves the right to make modifications to this list at any time and without prior notice.